



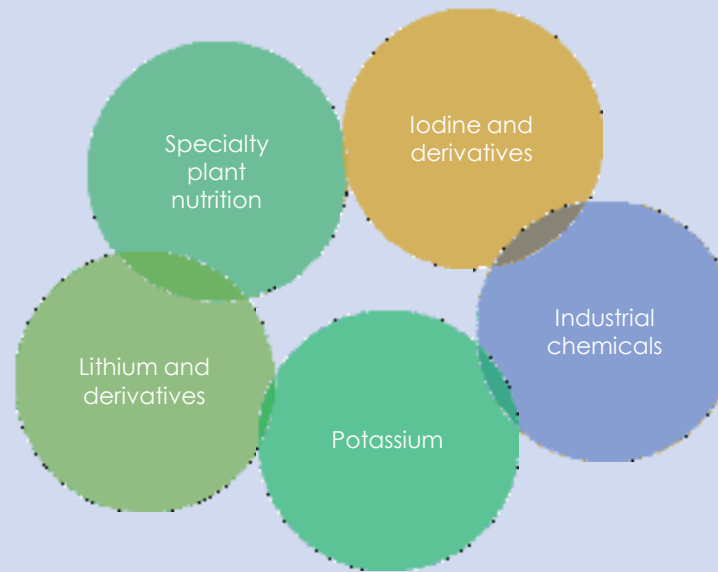
**Solutions  
for human  
progress**

# SQM, from Chile to the World

## Global presence

We develop our products from caliche ore and brines found in the Antofagasta and Tarapacá regions.

We are a global leader in each of our five business lines:



## Offices in Chile

Iquique

Antofagasta

Santiago



6,997 employees in Chile and around the world.



11,685 average annual number of contractors.



ThUS\$10,710,578 in sales revenue.



We have the largest market capitalization on the Santiago stock exchange.



98%

of our sales were outside Chile in 2022.

Our products are sold in  
**+100 countries**

## Production Sites in Chile

Nueva Victoria

Tocopilla

Pedro de Valdivia

Planta Quimsica de Lito Carmen



Maria Elena

Coya Sur

Saler de Atacama

Pampa Blanca

## Our People

We aim to have a 25% female workforce by 2025.

**18,682**  
jobs



**6,997**

SQM's workforce in Chile and around the world as of December 2022



**20%**

of worldwide employees are women



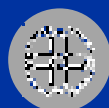
**30%**

of supervisor positions are held by women



**11,685**

Average annual number of contractors



**9%**

Turnover rate in Chile in 2022

## Suppliers

### Local suppliers

We purchase **US\$770,051,711 from local suppliers** from the Tarapacá and Antofagasta regions.

### Main initiatives

- SME suppliers are paid immediately or within 15 days.
- A surety bond is accepted when a performance bond cannot be provided.
- We promote the *Más Tarapacá* Suppliers Program to generate opportunities for local suppliers.
- We use local suppliers for parts, pieces and spare parts and for the repair of major equipment.
- We have begun conducting a Sustainability Self-Assessment for suppliers. We assign 10% of value to sustainability for the awarding of some contracts in this initial stage.

We created a supplier portal to improve our communications

# Sustainability Plan

## Our progress

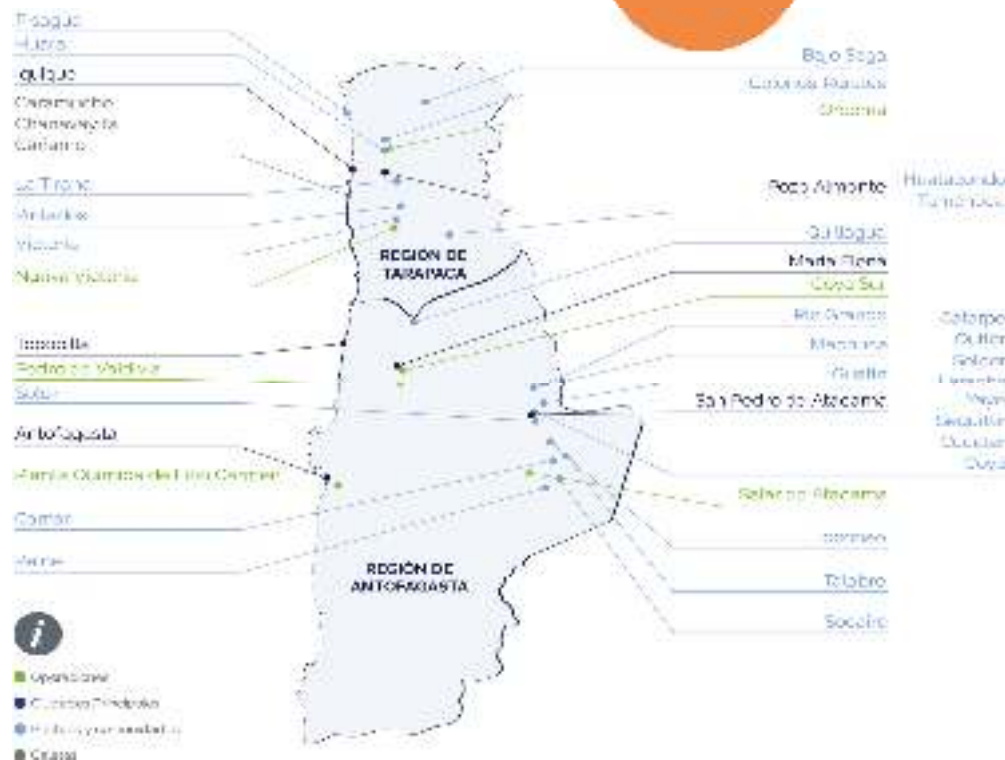


# SQM, Present in the Community



Total direct investments by SQM in the community

**US\$17,924,772**



# Investments

## Actual and Future

Nitrates & Iodine CAPEX	Investment Plan				Total
	2023	2024	2025	2026	2023-26

Operation Centers & Sol. Pumping	MUS\$	32	39	1	81	153
Mining Equipment	MUS\$	26	37	33	16	112
NPT Plants	MUS\$	20	0	-	-	20
MLK Project - Coya Sur	MUS\$	-	-	-	55	55
General Maintenance	MUS\$	50	133	81	78	342
<b>Maintenance</b>	<b>MUS\$</b>	<b>128</b>	<b>209</b>	<b>114</b>	<b>230</b>	<b>681</b>

<b>New Projects</b>	<b>MUS\$</b>	<b>33</b>	<b>150</b>	<b>196</b>	<b>-</b>	<b>379</b>
---------------------	--------------	-----------	------------	------------	----------	------------

<b>Exploration &amp; Investigation</b>	<b>MUS\$</b>	<b>13</b>	<b>36</b>	<b>24</b>	<b>14</b>	<b>88</b>
--	--------------	-----------	-----------	-----------	-----------	-----------

Orcoma	MUS\$	18	-	-	-	18
Pampa Blanca	MUS\$	27	3	-	-	30
Increase NPK Capacity	MUS\$	6	5	6	6	23
<b>Capacity Increase</b>	<b>MUS\$</b>	<b>51</b>	<b>8</b>	<b>6</b>	<b>6</b>	<b>70</b>

NPT I Feed Conditioning	MUS\$	-	-	-	-	-
Logistics Digitalization	MUS\$	1	1	-	-	3
Atmospheric Plant Improvement	MUS\$	8	4	-	-	12
Current Plants Improvement	MUS\$	4	11	-	-	15
<b>Quality, Productivity &amp; Improvement</b>	<b>MUS\$</b>	<b>14</b>	<b>16</b>	<b>-</b>	<b>-</b>	<b>29</b>

<b>Total Nitrate &amp; Iodine</b>	<b>MUS\$</b>	<b>238</b>	<b>419</b>	<b>340</b>	<b>250</b>	<b>1,248</b>
-----------------------------------	--------------	------------	------------	------------	------------	--------------



55% of the total CAPEX will be expended on Maintenance.



3 new projects will be developed in the coming years.

Nitrates & Iodine CAPEX		2023	2024	2025	2026	2023-26
<b>New Projects</b>	<b>MUS\$</b>	<b>33</b>	<b>150</b>	<b>196</b>	<b>-</b>	<b>379</b>
TEA New Iodide Plant	MUS\$	18	18	5	-	41
TEA Seawater Pipeline	MUS\$	15	114	150	-	278
TEA Evaporation Ponds	MUS\$	-	18	42	-	60



88 MUS\$ will be expended in exploration and research.



312 MUS\$ will be spent yearly between 2023 and 2026.



# New Projects

## TEA Seawater Pipeline

The TEA Seawater Pipeline project will provide Nueva Victoria with 900 l/s of seawater by 2026, and it could replace completely the use of continental water from underground wells. This will provide flexibility for the leaching operation and improve yields for iodine and nitrates.

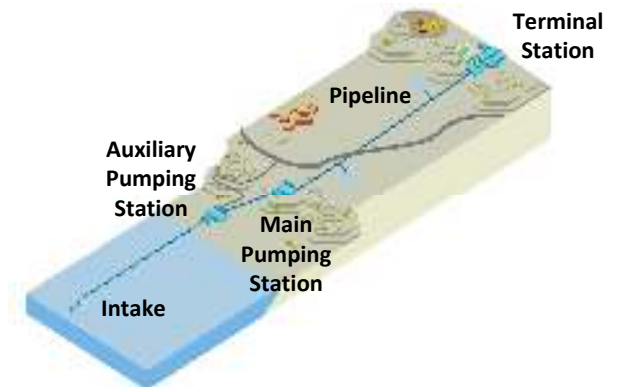
This project confirms the commitment to transitioning to 100% seawater use in the 1st Region.

## TEA Iodide Plant

This plant will process approximately 1,100 m<sup>3</sup>/hr and produce about 6,000 tons of iodine per year. And this does not necessarily lead to an increase in production, but the system would have a greater production capacity to better respond to any market necessity.

This plant is located more than 20 km from the current iodide plant in Nueva Victoria.

The implementation of the Iodide Plant at the TEA location could result in energy savings for solution pumping.





**Solutions  
for human  
progress**